



Nasheen Nattan
082 465 9467

nasheen@wakefields.co.za

Contact Wakefields Malvern

031 464 9332

206 Office Park
155 Main Road
Malvern
Durban
4092

On Show

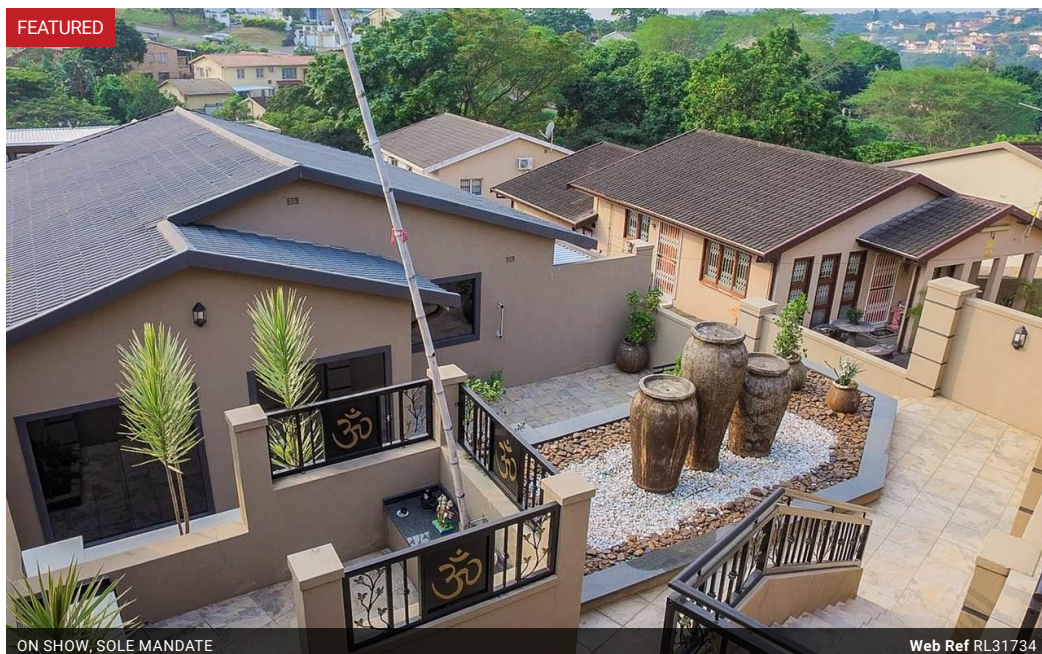
14:00 to 17:00

Sunday, 28 May 2017

Directions

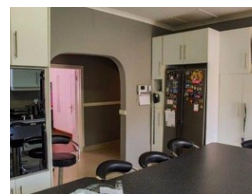
Follow Wakefields boards from Stella Road and Fremantle Road robots to Walworth Road.

FEATURED



ON SHOW, SOLE MANDATE

Web Ref RL31734



R2,500,000

4 3 2

Monthly Bond Repayment R24,959.50

Calculated over 20 years at 10.5% with no deposit.

Transfer Costs R145,943.20 **Bond Costs** R27,789.20

These calculations are only a guide. Please ask your conveyancer for exact calculations.

Monthly Rates R864

4 BEDROOM HOUSE FOR SALE IN HILLARY

"Wow" is the word to describe this family home! A truly special place with good proportions and versatility allowing you to place your own accent on how you would like to live! Great entertainment flow from the recreation lounge to covered entertainment area where family and friends will spend many leisure hours.

Features

Interior

| | |
|--------------|---|
| Bedrooms | 4 |
| Bathrooms | 3 |
| Kitchens | 1 |
| Recep. Rooms | 3 |
| Studies | 1 |

Exterior

| | |
|---------------------|-----|
| Carports / Parkings | 2 |
| Security | Yes |
| Pool | Yes |
| Views | Yes |

Sizes

| | |
|-----------|---------------------|
| Land Size | 1,745m ² |
|-----------|---------------------|

